

Ouvertüre Nr. 3

Ludwig van Beethoven op. 72

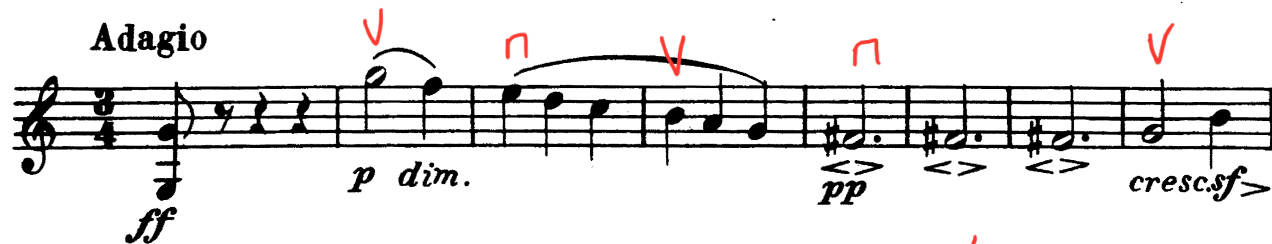
Violine I

zur Oper

Leonore

K₂₄

Adagio



VIOLIN I

3

126 *cresc.* *p* *cresc.*

138 *pp* *sempre pp*

145 *sempre staccato*

154 *cresc.*

163 *ff* *sf* *sf*

169 *sf* *sf* *sf* *sf* *sf* *sf* *f* *f* *f*

175 *f* *p* *f* *dim.*

184 *p dim.* *pp* *ff*

193 *p* *ff* *p*

205 *ff*

216 *p* *ff* *p*

226 *cresc.*

Handwritten annotations include red slurs, accents, and fingerings (1, 2, 3) throughout the score.

VIOLIN I[illegible]

VIOLIN I

5

358 *cresc. poco a poco*

368 *ff*

377 *sempre ff*

383

389 *sf sf sf sf sf sf*

398 *sf sf* *p dolce*

408 *cresc.* *p* *cresc.*

420 *sempre pp*

431

440 *cresc.*

448 *ff*

454 *pizz.* 8

VIOLIN I

469 arco *p* *cresc. sf* *p dim.* 1

483 *p sf* 2 *p sf* 2 *p sf* *p sf* *p*

496 *sf* *p sf* *p* *p* *sempre pp* V V V V

506 V

514 Presto due o tre Violini *cresc. poco a poco* 2 3 4 4

519 *cresc.* 2

524 1 2 3

529 4 5 6 7

534 Tutti *ff* *sf* 4 1 3

539 1

544 *sf* *sf* *sf* *sf* *sf* *sf* *sf* *sf* V

551 *sf* *sf* *sf* *sf* *sf* *sf* *sf* *sf* V

1

[illegible]